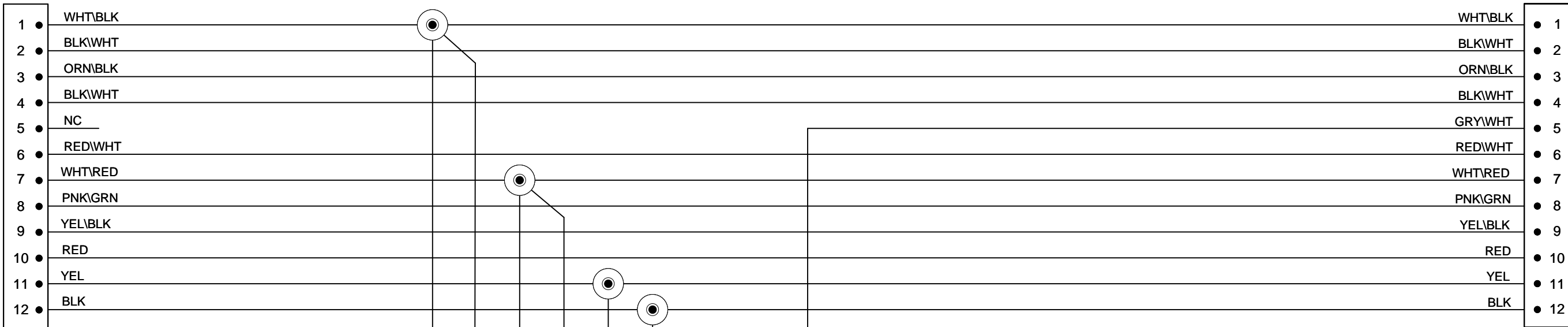
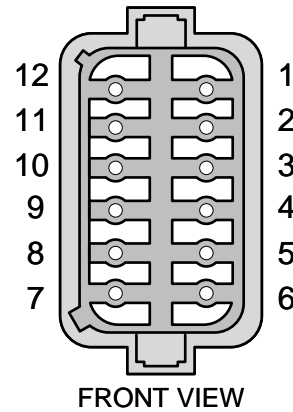


C-1

C-1 BULKHEAD PASS-THRU IN		
QTY	DESCRIPTION	PCS P/N
1	CONNECTOR	CON-5542
12	TERMINALS	CON-5400
1	TPA	CON-5508

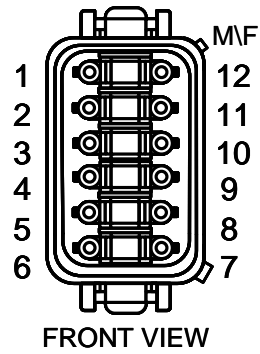


C-2



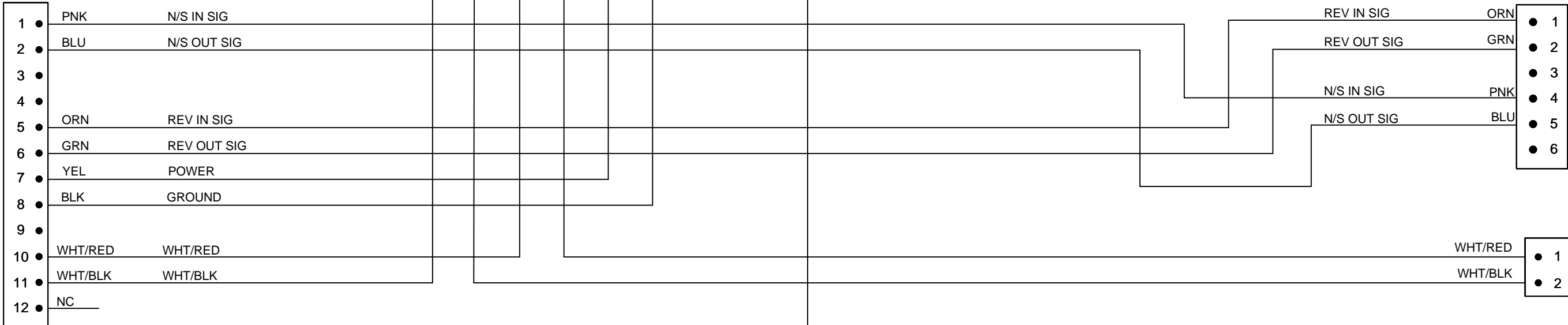
C-2 BULKHEAD PSS-THRU OUT		
QTY	DESCRIPTION	PCS P/N
1	CONNECTOR	CON-5543
12	TERMINALS	CON-5401
1	TPA	CON-5544

TO E-SHIFTER



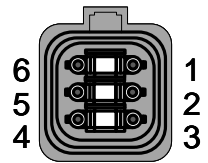
C-3

C-3 E-SHIFTER CONNECTOR		
QTY	DESCRIPTION	PCS P/N
1	CONNECTOR	CON-5551
9	TERMINALS	CON-5400
1	WEDGE	CON-5508
3	PLUGS	CON-5530

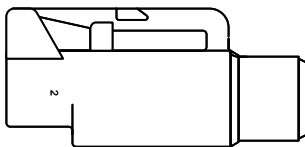


C-4 MORSE INTERFACE		
QTY	DESCRIPTION	PCS P/N
1	CONNECTOR	CON-5518
4	TERMINALS	CON-5401
1	TPA	CON-5519
2	PLUGS	CON-5530

C-4



C-5

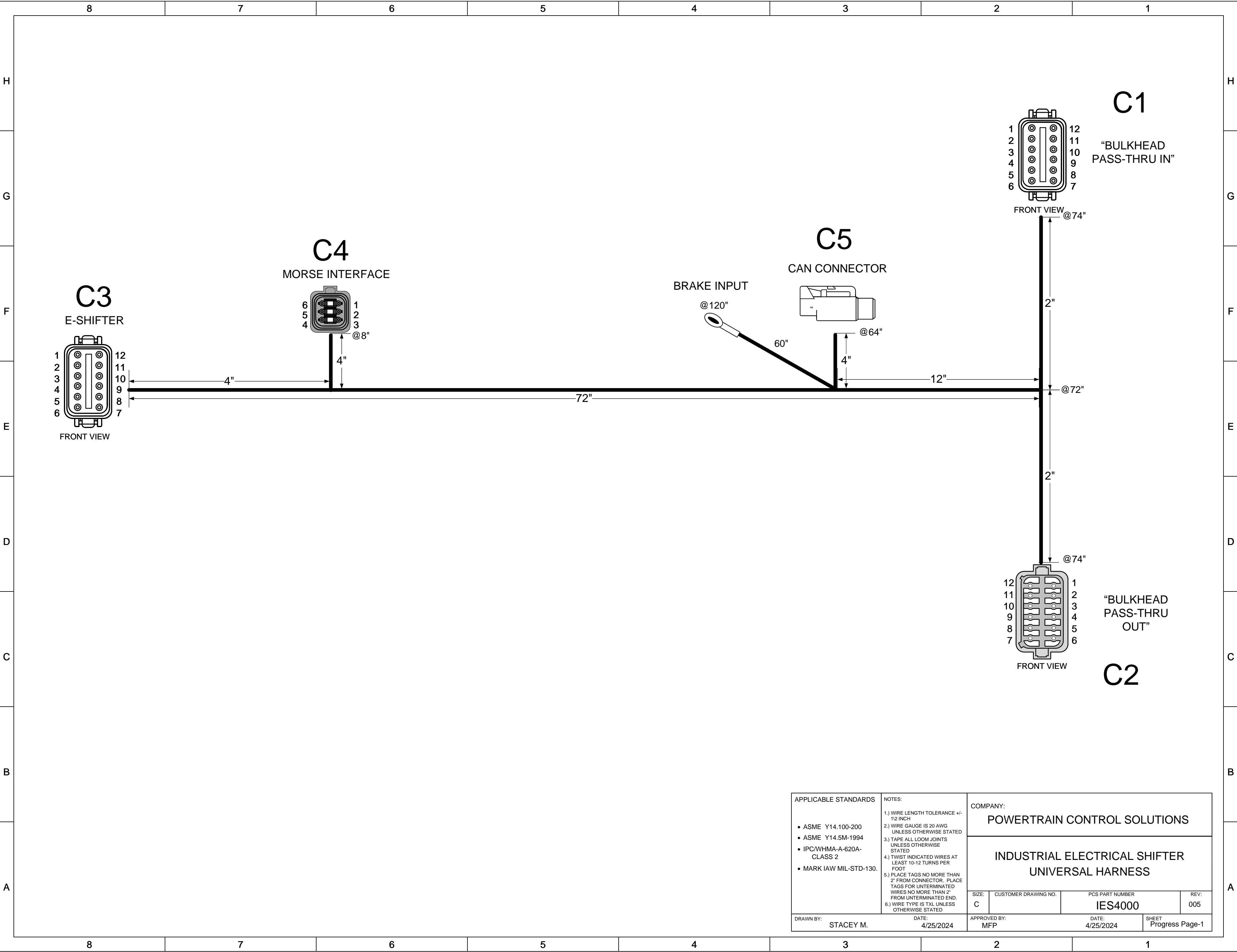


CAN BUS
CONNECTOR

C5 CAN BUS			C7 CAN BUS CAP		
QTY	DESCRIPTION	P/N	QTY	DESCRIPTION	P/N
1	CONNECTOR	CON-5050	1	CONNECTOR	CON-5001
2	TERMINALS	CON-5200	2	TERMINALS	CON-5210
1	TPA	CON-5100			

BRAKE SIG GRY/WHT CON-0340

APPLICABLE STANDARDS		NOTES:		COMPANY:					
<ul style="list-style-type: none">• ASME Y14.100-200• ASME Y14.5M-1994• IPC/WHMA-A-620A-CLASS 2• MARK IAW MIL-STD-130.		1.) WIRE LENGTH TOLERANCE +/- 1/2 INCH		POWERTRAIN CONTROL SOLUTIONS					
		2.) WIRE GAUGE IS 20 AWG UNLESS OTHERWISE STATED		INDUSTRIAL ELECTRICAL SHIFTER UNIVERSAL HARNESS					
		3.) TAPE ALL LOOM JOINTS UNLESS OTHERWISE STATED							
		4.) TWIST INDICATED WIRES AT LEAST 10-12 TURNS PER FOOT							
		5.) PLACE TAGS NO MORE THAN 2" FROM CONNECTOR. PLACE TAGS FOR UNTERMINATED WIRES NO MORE THAN 2" FROM UNTERMINATED END.							
		6.) WIRE TYPE IS TXL UNLESS OTHERWISE STATED		SIZE: C		CUSTOMER DRAWING NO.		PCS PART NUMBER IES4000	
DRAWN BY: STACEY M.		DATE: 4/25/2024		APPROVED BY: MFP		DATE: 4/25/2024		SHEET Progress Page-1	



APPLICABLE STANDARDS		NOTES:		COMPANY:			
				POWERTRAIN CONTROL SOLUTIONS			
				INDUSTRIAL ELECTRICAL SHIFTER UNIVERSAL HARNESS			
DRAWN BY: STACEY M.		DATE: 4/25/2024		SIZE: C	CUSTOMER DRAWING NO.	PCS PART NUMBER IES4000	REV: 005
				APPROVED BY: MFP		DATE: 4/25/2024	SHEET Progress Page-1